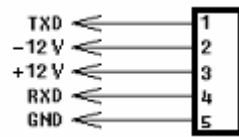


Datalogger and USB Interface

Wiring Hardware	2
Protocol	3
Hardware Requirements and Setup	4
Software Requirements and Setup	5
Communicating Operation	7
Run the Software	7
Record.....	8
Download.....	10
Data Convert.....	11
Apply for Excel	11
Apply for Graph.....	13
Sampling Time.....	14
RTC.....	15

Wiring Hardware

USB Diagram



Hardware Requirements and Setup

PC HardWare Requirements :

HDD, CD Rom, 486 PC or above, with available USB port

EGA or higher monitor

4M bytes or more memory size

PC HardWare Setup :

Connect the Meter with PC by USB cable

Software Requirements and Setup

- 1 Start up windows 7 / 8 operating system
- 2 Close all other applications
- 3 Insert the disk in CD drive
(if autorun does not start, open the CD drive
then execute "setup.exe")

Follow the on-screen instructions.

1).



Setup will run automatically.

2).



Click Next> button

3).



Click **Install** button

If there shows a “User Account Control” window that asks
“Do you want to allow the following program from an unknown
publisher to make changes to this computer?”

Click **Yes** button

4).



Click **Finish** button to complete.

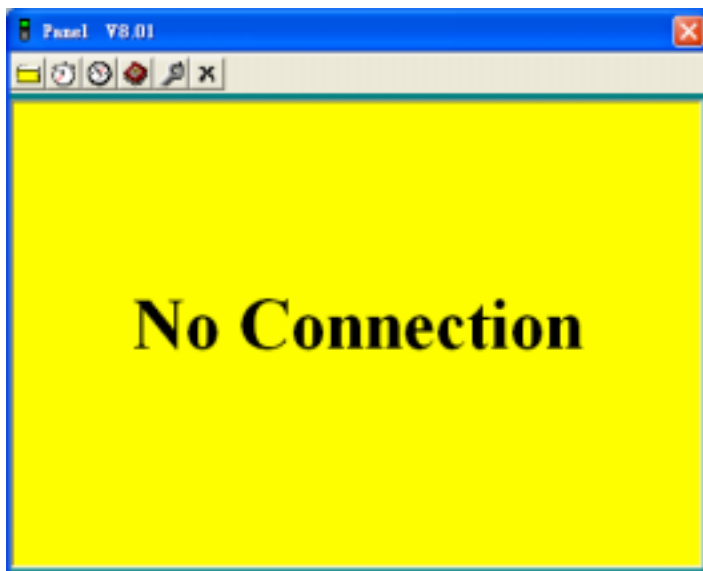
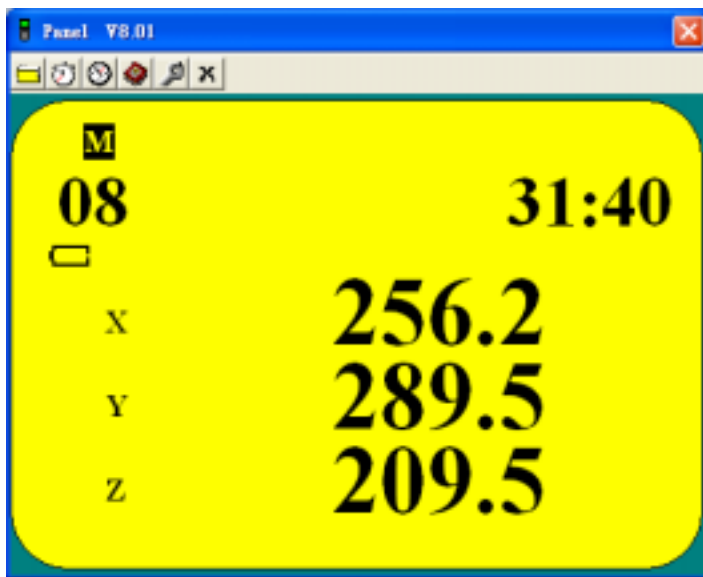
On-Line Operation

■ Run the software



1. Click ChromaMeter


2. Main software screen



If no connection then there shows “No Connection” on the screen

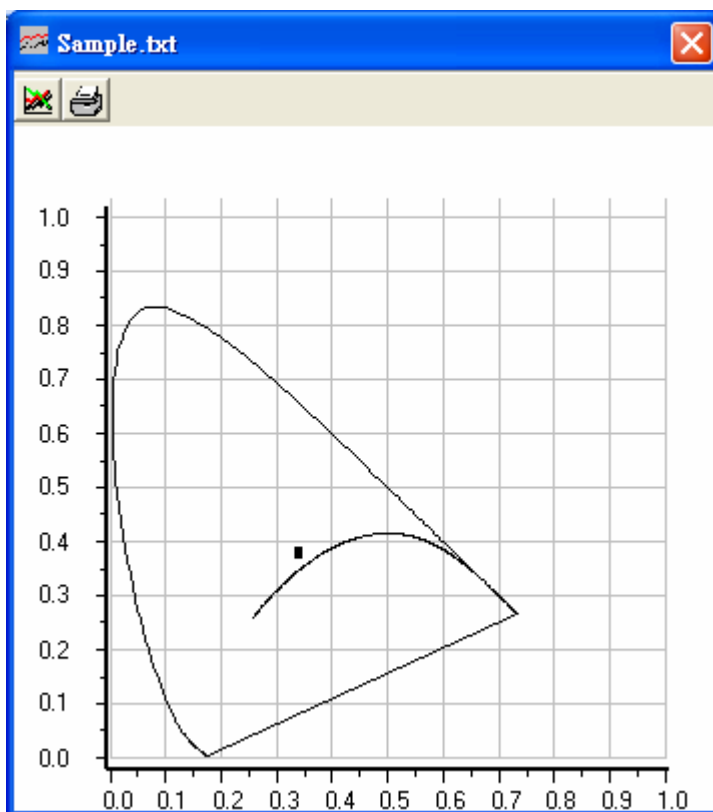
Download Data

1. Download Data from Hard Disk


Click  button. The Open window, shown below, appears

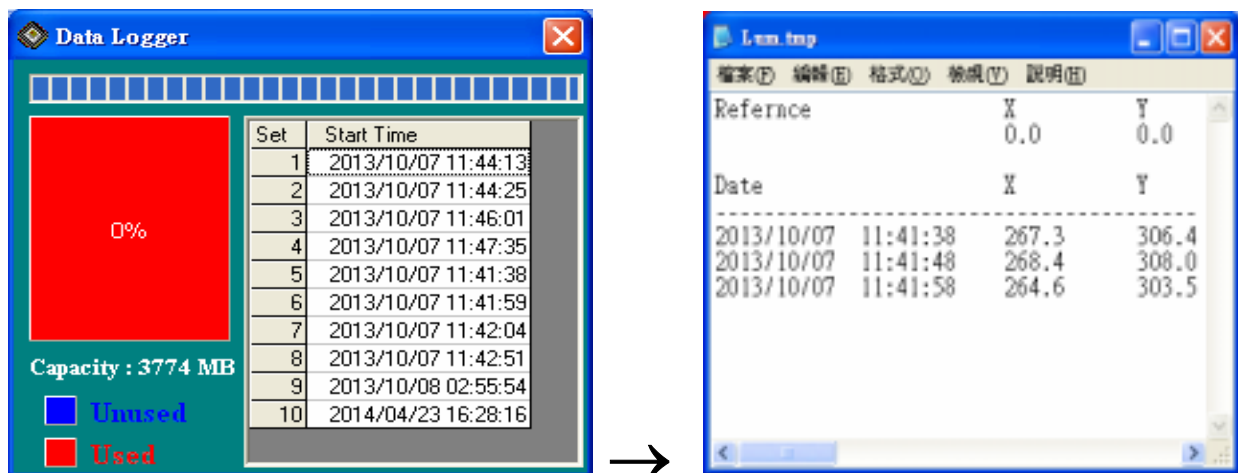


Input the file that was selected earlier and then click the Open button.




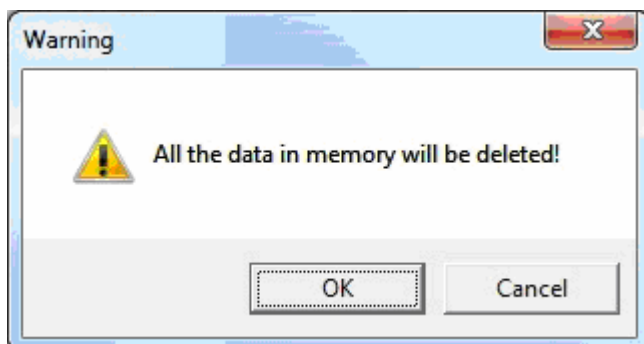
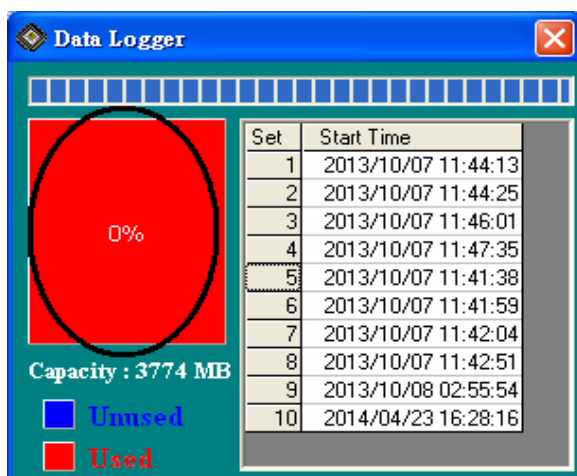
2. Download Data from EEP ROM

Click  button. The Data Logger window, shown below, will open.



Click on a SET number to view the set's details. For example, in the window above, there are 10 sets from which to choose. The list rightside is an example of an opened set.

To erase saved data in EEP ROM, click  in the **Menu Bar** or the Memory label (see below) in the Data Logger window




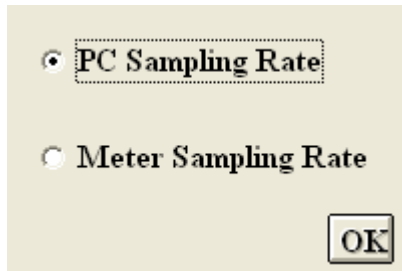
Press OK to confirm.

■ Sampling Time

PC Sampling Rate:

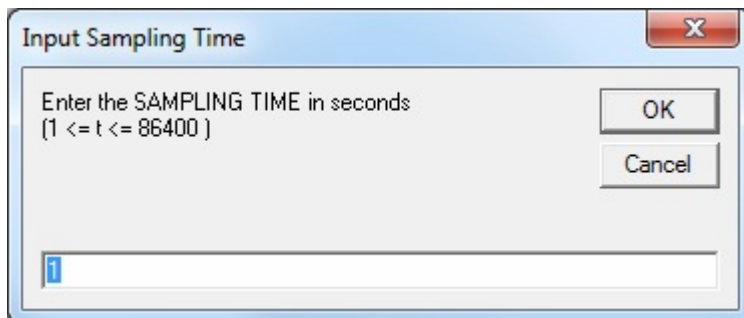
(rate at which the PC collects readings while connected to the meter)

Click  on the **Menu Bar**.



A dialog box with a light beige background. It contains two radio buttons. The first radio button is selected and is followed by the text "PC Sampling Rate". The second radio button is unselected and is followed by the text "Meter Sampling Rate". At the bottom right of the dialog is an "OK" button.

Choose "PC Sampling Rate" and then click "OK" button.




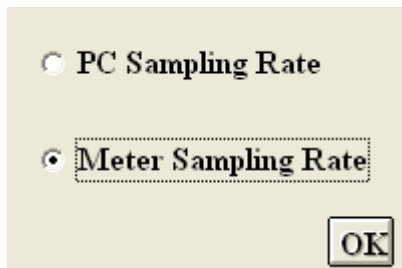
A dialog box titled "Input Sampling Time" with a blue header bar and a red close button. The main area is light gray and contains the text "Enter the SAMPLING TIME in seconds" followed by the range "(1 <= t <= 86400)". Below this text is a text input field containing the number "1". To the right of the input field are two buttons: "OK" and "Cancel".

Input a sampling time and then click "OK" button to confirm.

Meter Sampling Rate:

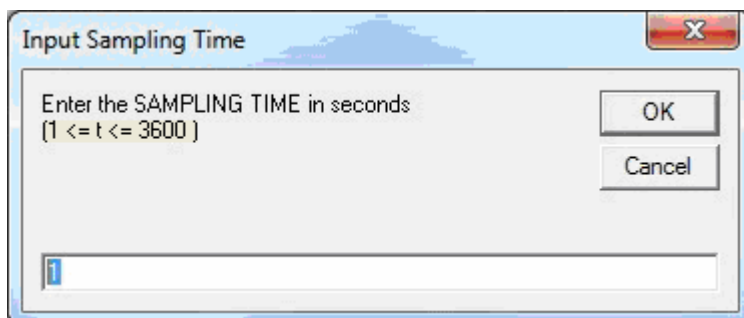
(rate at which meter stores readings)

Click  on the **Menu Bar**.



A dialog box with a light beige background. It contains two radio buttons. The first radio button is unselected and is followed by the text "PC Sampling Rate". The second radio button is selected and is followed by the text "Meter Sampling Rate". At the bottom right of the dialog is an "OK" button.


Choose "PC Sampling Rate" and then click "OK" button.

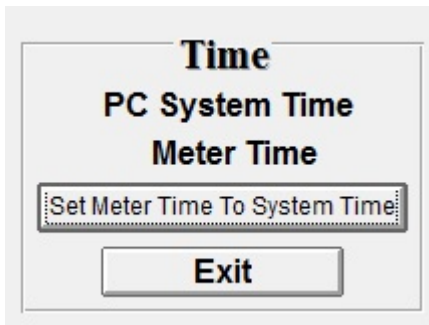


A dialog box titled "Input Sampling Time" with a blue header bar and a red close button. The main area is light gray and contains the text "Enter the SAMPLING TIME in seconds" followed by the range "(1 <= t <= 3600)". Below this text is a text input field containing the number "1". To the right of the input field are two buttons: "OK" and "Cancel".

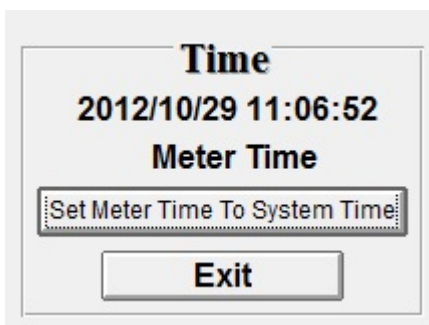
Input a sampling time and then click "OK" button to confirm.


■ RTC (Real Time Clock)

Click  on the **Menu Bar** to set the meter time to PC system time.



Click **PC System Time** to show PC System Time or **Meter Time** to show Meter Time.



Click  to set the meter time to PC system time.

