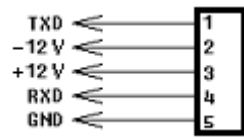


Instruction Manual

Wiring Hardware	2
Hardware Requirements and Setup	3
Software Requirements and Setup	4
Communicating Operation	8
Run the Software	8
Control Panel.....	9
Record.....	10
Download.....	11
Sampling Time.....	14
RTC.....	15
Measurement Time.....	16
Storage.....	17
Trigger.....	18
Comparator.....	19

Wiring Hardware

USB Diagram



Hardware Requirements and Setup

PC HardWare Requirements :

HDD, CD Rom, 486 PC or above, with available USB port

EGA or higher monitor

4M bytes or more memory size

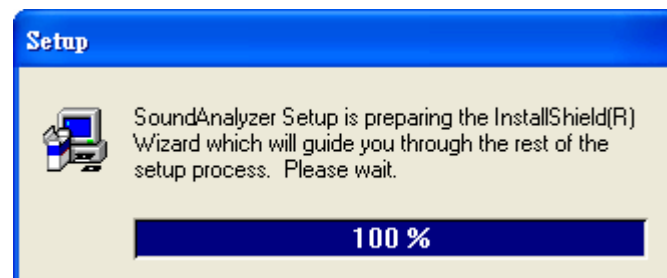
PC HardWare Setup :

Connect the Meter with PC by USB cable

Software Requirements and Setup

- 1 Start up windows operating system
 - 2 Close all other applications
 - 3 Insert the disk in CD drive
- (if autorun does not start, open the CD drive
then execute "setup.exe")
- Follow the on-screen instructions.

1).



Setup will run automatically.

2).



Click Next> button

3).



The 'User Information' dialog box has a blue title bar with the text 'User Information' and a close button. On the left is a graphic of a computer monitor, keyboard, and CD-ROMs. The main area contains the text: 'Please enter your name and the name of the company for whom you work.' Below this are two text input fields. The first is labeled 'Name:' and contains the text 'user name'. The second is labeled 'Company:' and contains the text 'user company'. At the bottom are three buttons: '< Back', 'Next >', and 'Cancel'.

User Information

Please enter your name and the name of the company for whom you work.

Name: user name

Company: user company

< Back Next > Cancel

a. Input user name and Company name

b. Click Next> button

4).



The 'Choose Destination Location' dialog box has a blue title bar with the text 'Choose Destination Location' and a close button. On the left is a graphic of a computer monitor, keyboard, and CD-ROMs. The main area contains the following text: 'Setup will install SoundAnalyzer in the following folder.', 'To install to this folder, click Next.', 'To install to a different folder, click Browse and select another folder.', and 'You can choose not to install SoundAnalyzer by clicking Cancel to exit Setup.' Below this text is a text box labeled 'Destination Folder' containing the path 'C:\Program Files\SoundAnalyzer'. To the right of this text box is a 'Browse...' button. At the bottom are three buttons: '< Back', 'Next >', and 'Cancel'.

Choose Destination Location

Setup will install SoundAnalyzer in the following folder.

To install to this folder, click Next.

To install to a different folder, click Browse and select another folder.

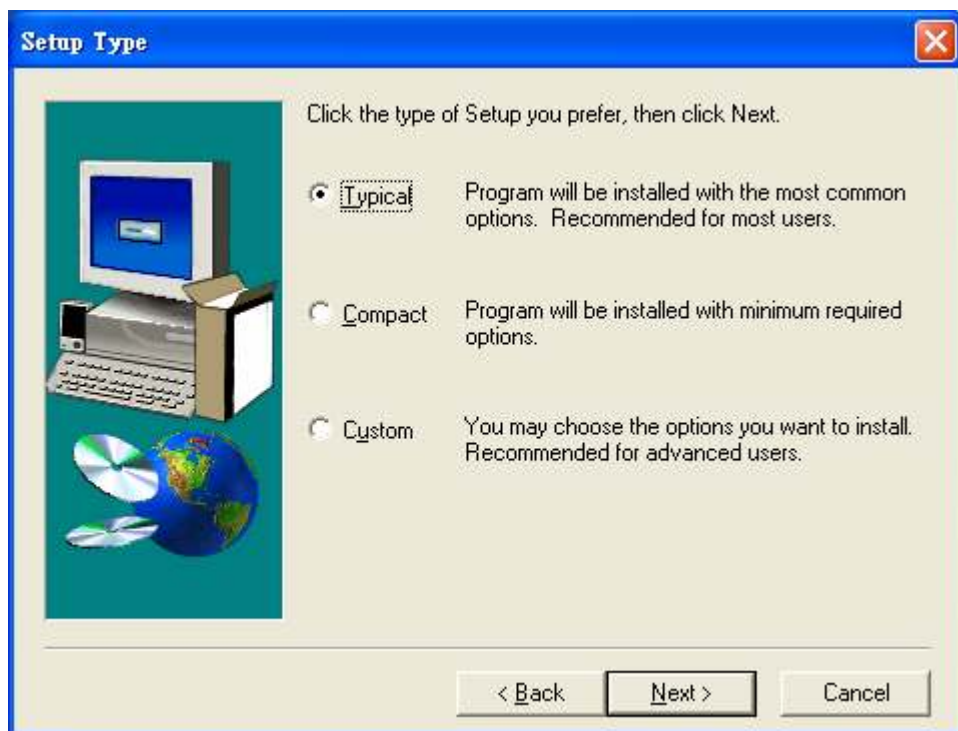
You can choose not to install SoundAnalyzer by clicking Cancel to exit Setup.

Destination Folder
C:\Program Files\SoundAnalyzer Browse...

< Back Next > Cancel

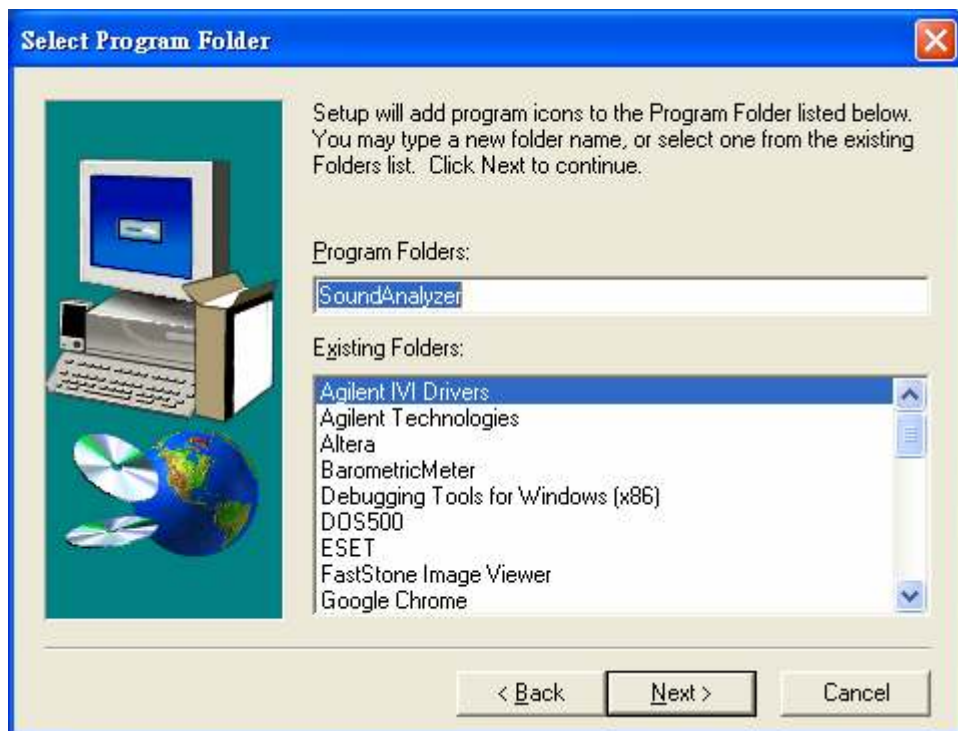
Click Next> button

5).



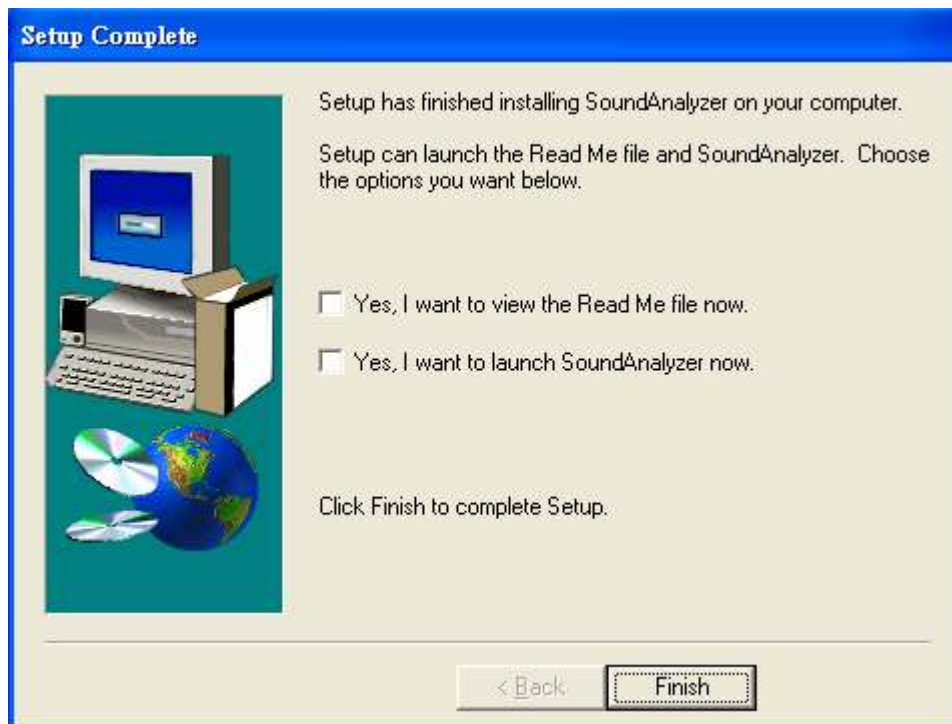
Click Next> button

6).



Click Next> button

7).



Click **Finish** button to complete.

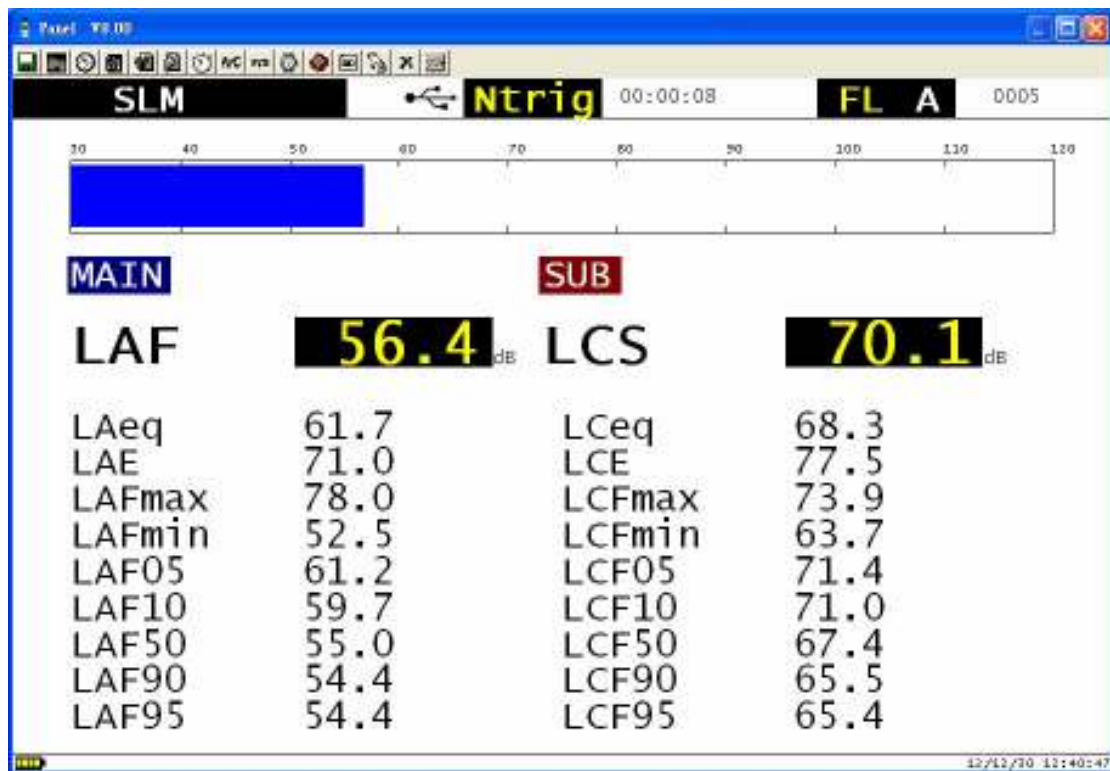
On-Line Operation

☐ Run the software




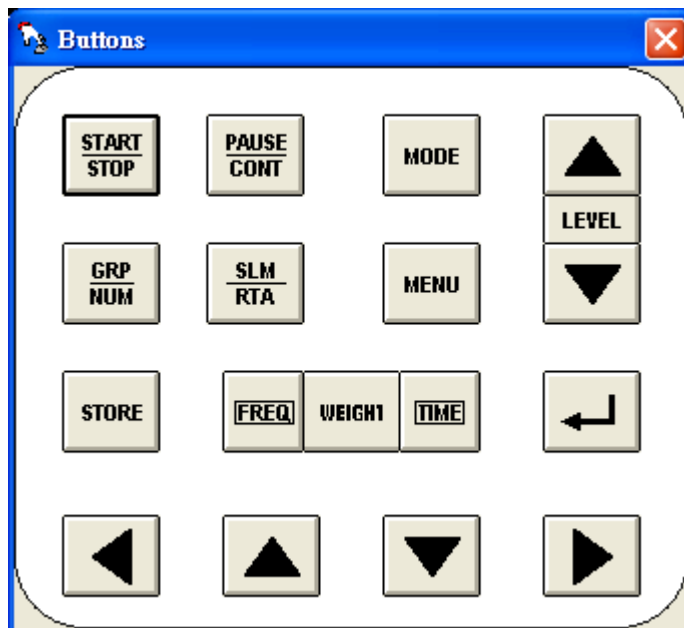
Run
SoundAnalyz
er

1. Click icon
2. Main software screen





☐ Control Panel

Click  on the Menu Bar to go to the Control Panel named "Buttons"




☐ **Record**

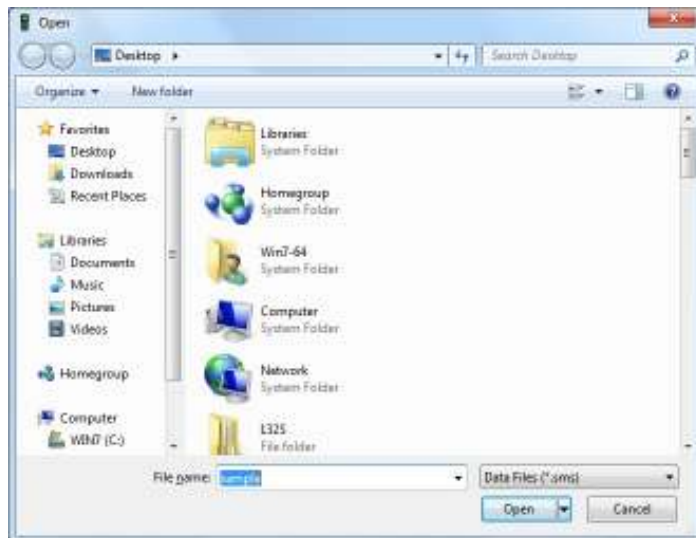
1. Click  to record data.

2. Stop recording when measurement time exceeds or by clicking  .

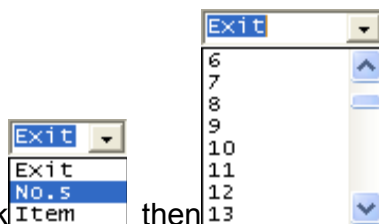
Download Data

1. Download Data from Hard Disk

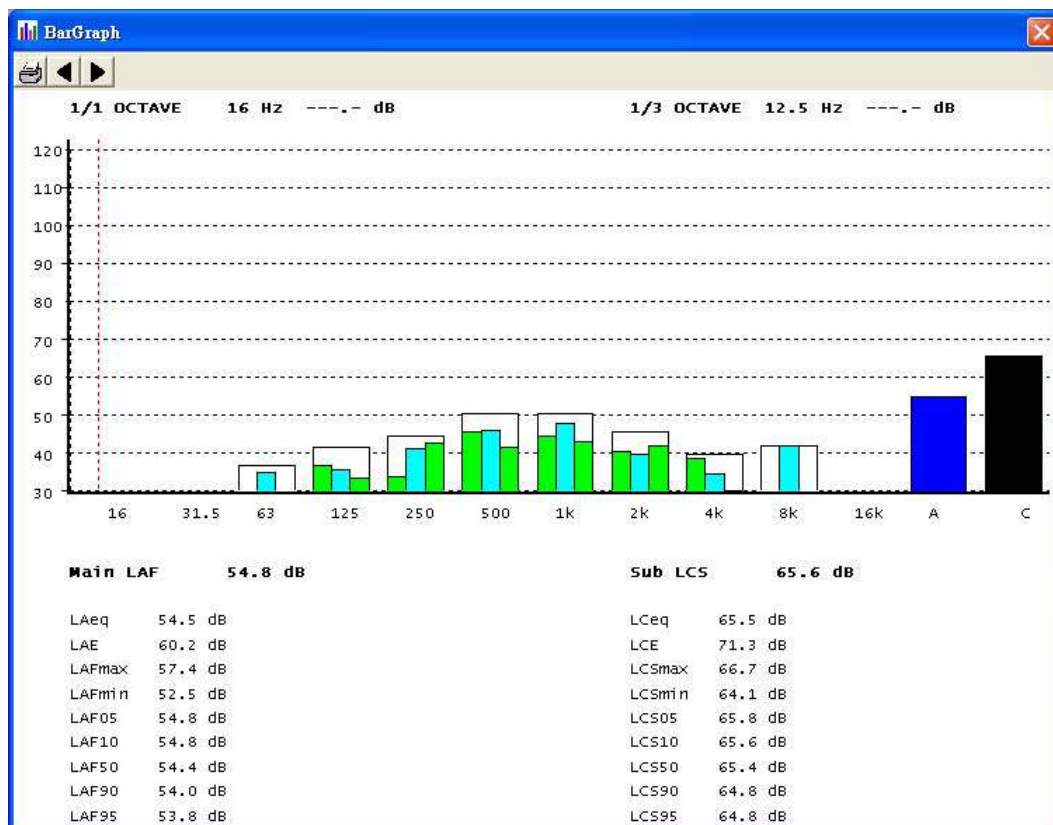
Click  button. The Open window, shown below, appears




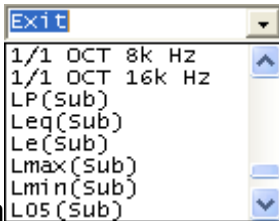
Input the file that was saved earlier and then click the Open button.

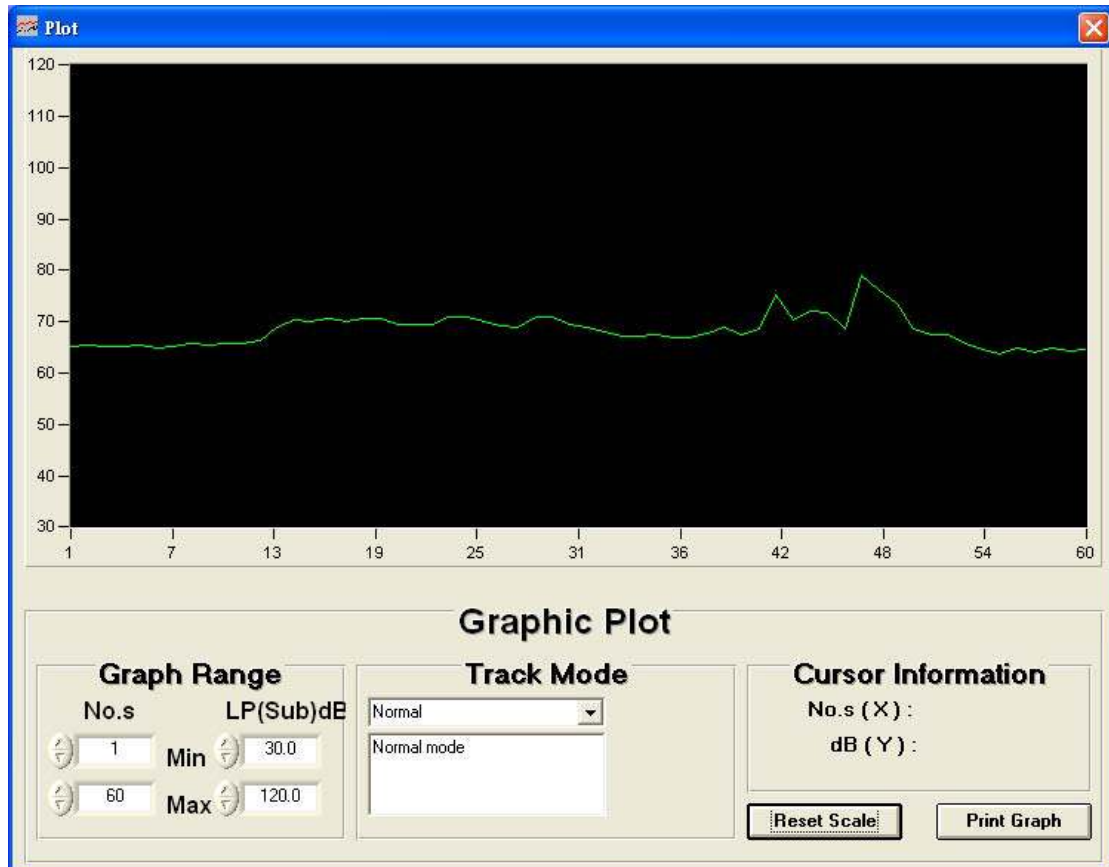


(1) Click **Exit** then **13** to get the data screen shot



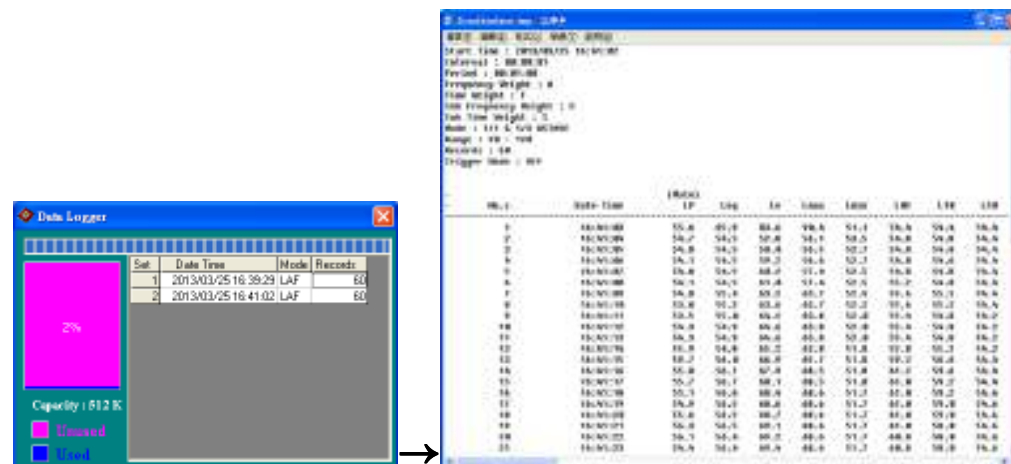
Or

(2) Click  then  to get graphic plot



2. Download Data from EEP ROM (Flash Memory)

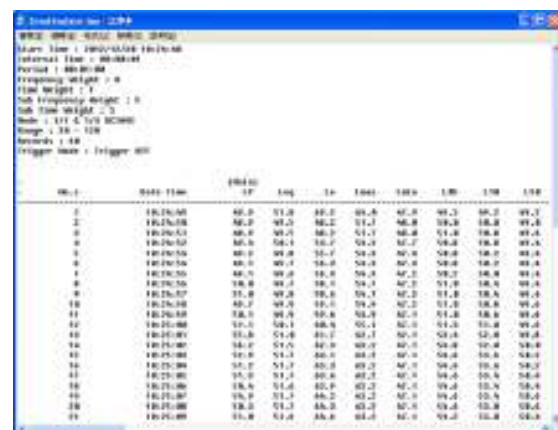
Click  button. The Data Logger window, shown below, will open

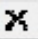


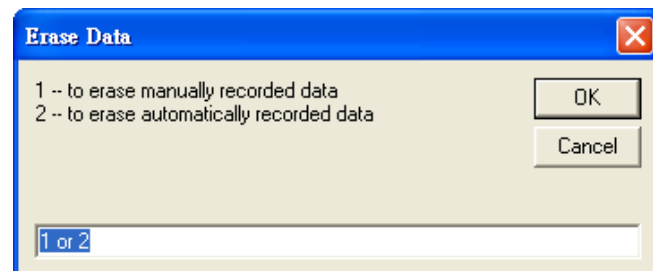
Click on a SET number to view the set's details. For example, in the window above, there are 2 sets from which to choose.

3. Download Data from SD card

Click  then  to view the details



To erase saved data in EEP ROM or SD Card, click  in the Menu Bar




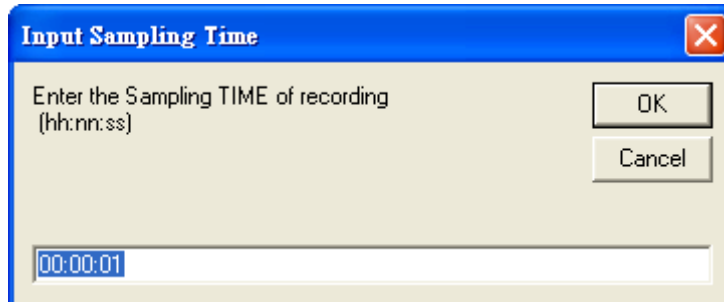
Input No. and press OK to confirm.

☐ **Sampling Time**

Meter Sampling Rate:

(rate at which meter stores readings)


Click  on the **Menu Bar**.

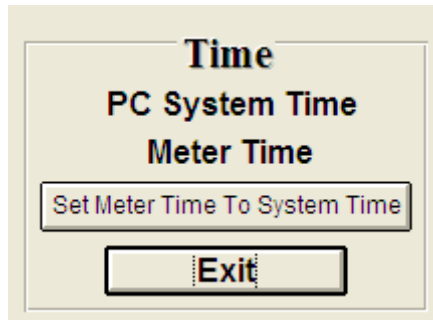


The dialog box has a blue title bar with the text "Input Sampling Time" and a red close button. The main area is light beige. It contains the text "Enter the Sampling TIME of recording (hh:nn:ss)" and two buttons, "OK" and "Cancel", on the right. At the bottom, there is a text input field with the value "00:00:01" highlighted in blue.

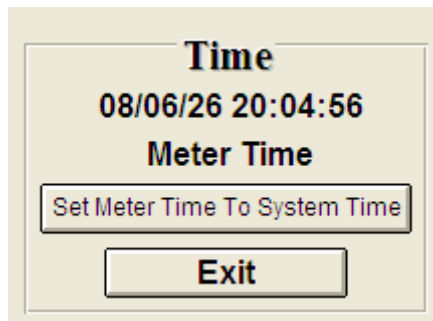
Input the correct sampling time format and then press “OK” to confirm


❑ RTC (Real Time Clock)

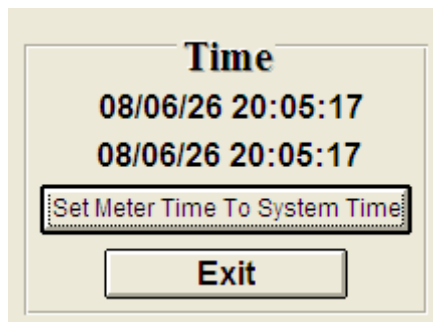
Click  on the **Menu Bar** to set the meter time to PC system time.



Click **PC System Time** to show PC System Time or **Meter Time** to show Meter Time.




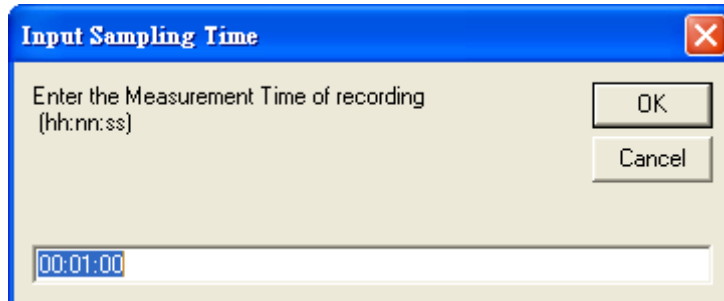
Click  to set the meter time to PC system time.



☐ **Measurement Time**

(time period which meter stores readings)

Click  on the **Menu Bar**.




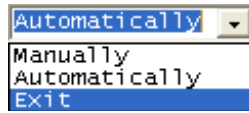
The dialog box has a blue title bar with the text "Input Sampling Time" and a red close button. The main area is light beige. It contains the text "Enter the Measurement Time of recording (hh:nn:ss)" and two buttons, "OK" and "Cancel", on the right. At the bottom, there is a text input field with the value "00:01:00" highlighted in blue.

Input the correct sampling time format and then press “OK” to confirm

□ Storage


Storage Mode

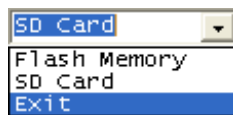
Click  on the **Menu Bar**.



Select the “Stroage Mode” to confirm

Storage


Click  on the **Menu Bar**.

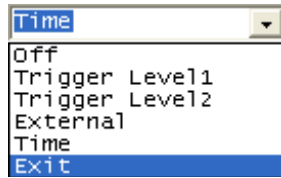


Select the “Stroage” to confirm

□ Trigger


(Trigger to Start Recording)

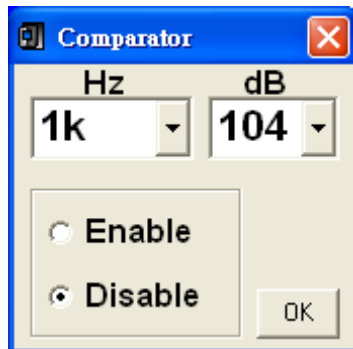
Click  on the **Menu Bar**.



Select the “Trigger” to confirm

☐ **Comparator**

Click  on the **Menu Bar**.



Select the “Comparator Value” and press “OK” to confirm