

# Datalogger and USB Interface

Hardware Requirements and Setup.....	1
Software Requirements and Setup.....	2
On-Line Operation .....	4
Run the software.....	4
Download Data .....	5
Sampling Time.....	7
RTC ( Real Time Clock) .....	8

# **Hardware Requirements and Setup**

## **PC HardWare Requirements :**

HDD, CD Rom, 486 PC or above, with available USB port

EGA or higher monitor

4M bytes or more memory size

## **PC HardWare Setup :**

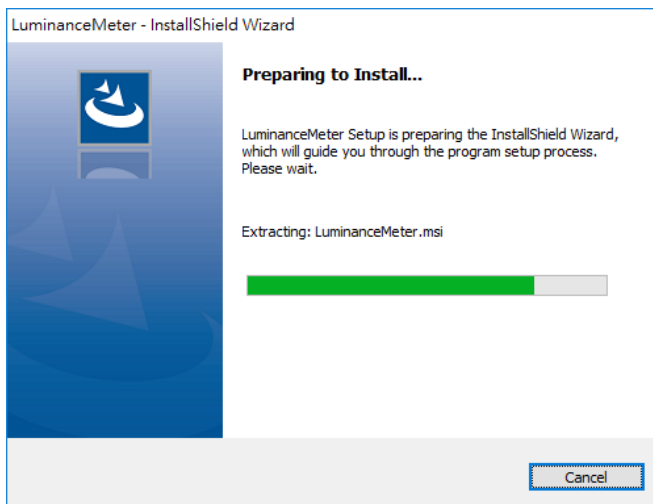
Connect the Meter with PC by USB cable

# Software Requirements and Setup

- 1 Start up windows 7 / 8 / 10 operating system
- 2 Close all other applications
- 3 Insert the disk in CD drive  
( if autorun does not start, open the CD drive  
then execute "Install\setup.exe" )

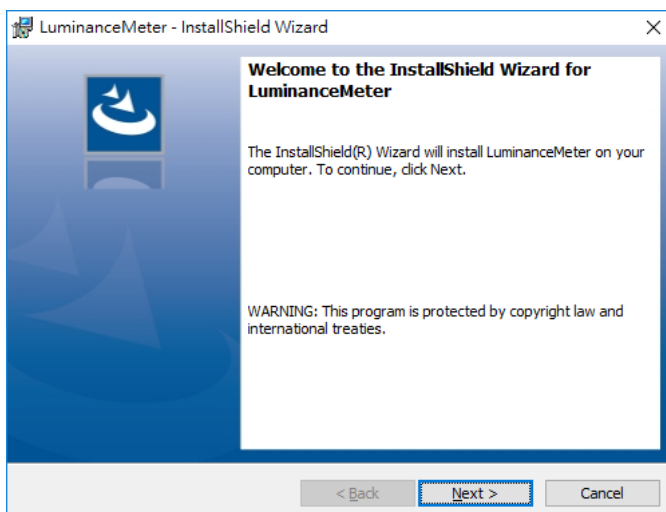
Follow the on-screen instructions.

1).



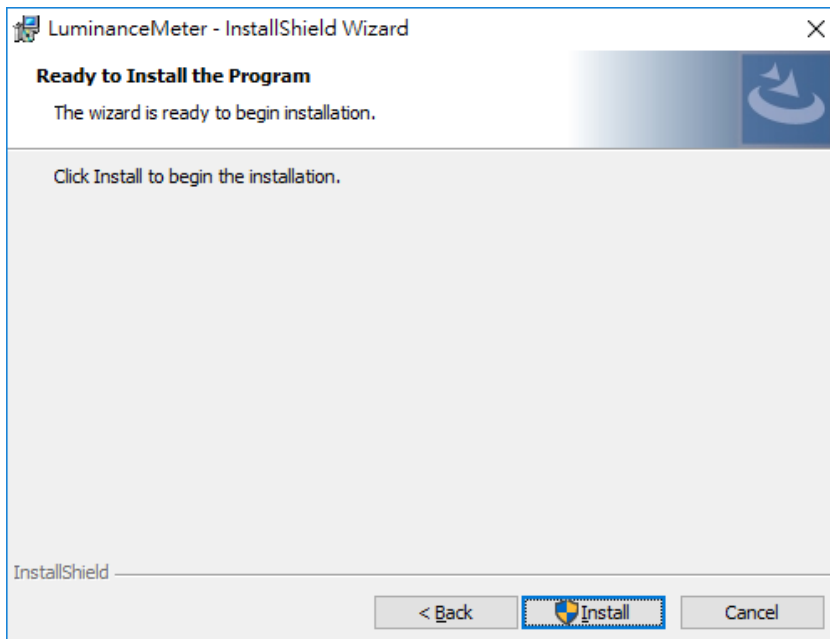
Setup will run automatically.

2).



Click Next> button

3).

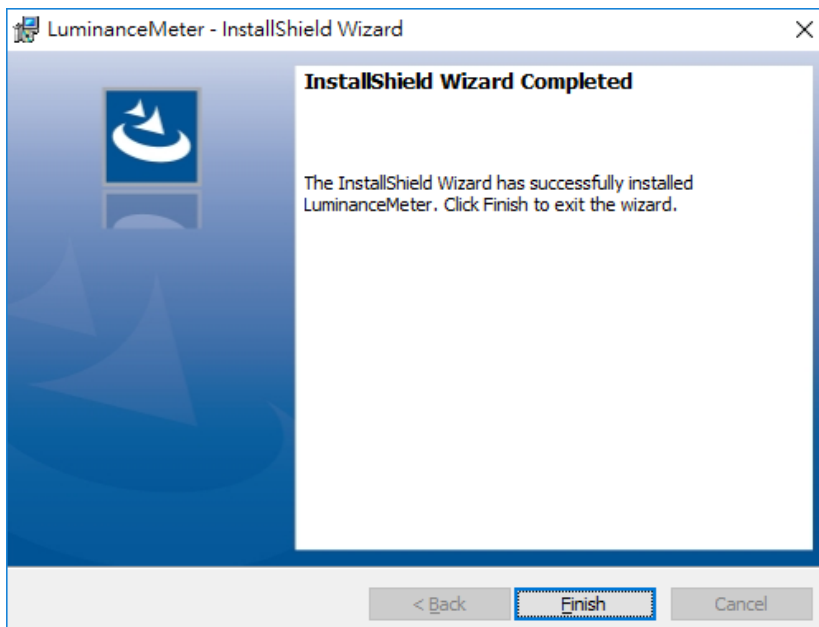


Click **Install** button

If there shows a “User Account Control” window that asks  
“Do you want to allow the following program from an unknown  
publisher to make changes to this computer?”

Click **Yes** button

4).



Click **Finish** button to complete.

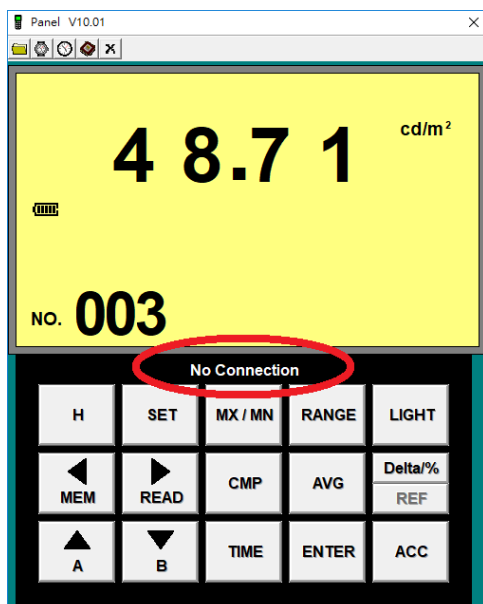
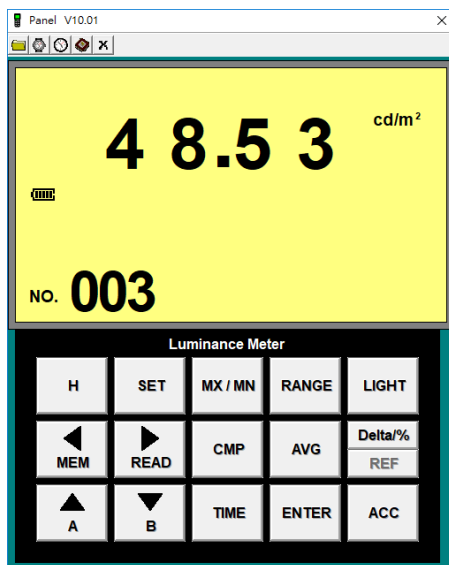
# On-Line Operation

## ■ Run the software



Run


1. Click `LuminanceMeter`
2. Main software screen

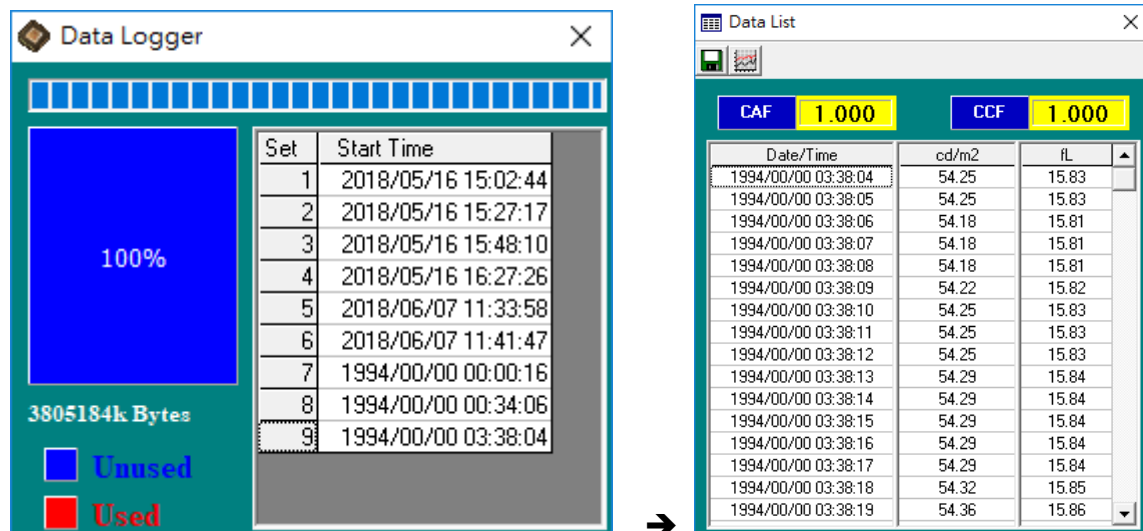


If no connection then there shows "No Connection" on the screen


## ■ Download Data

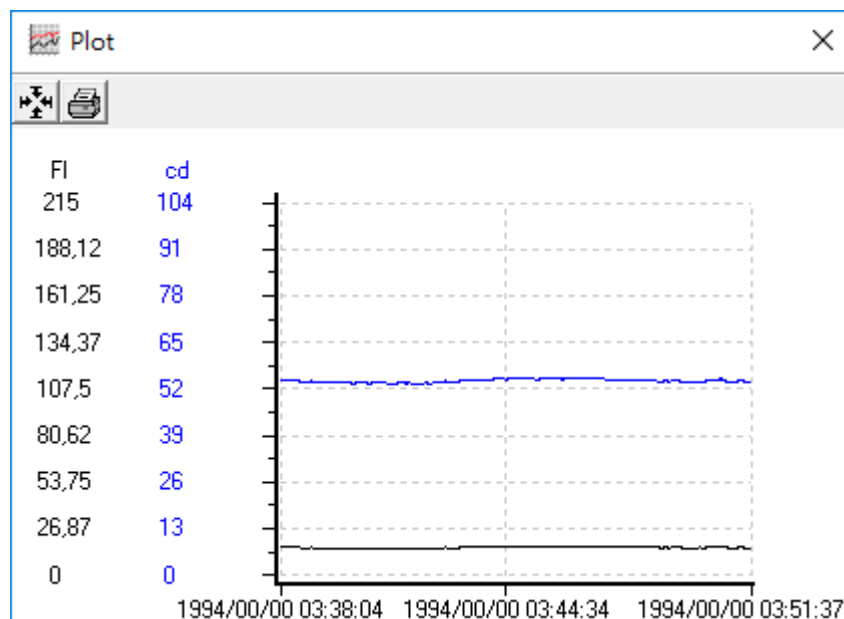
### 1. Download Data from EEPROM

Click  button. The Data Logger window, shown below, will open.

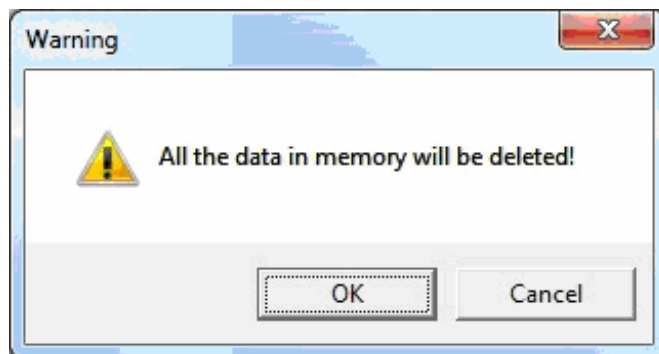
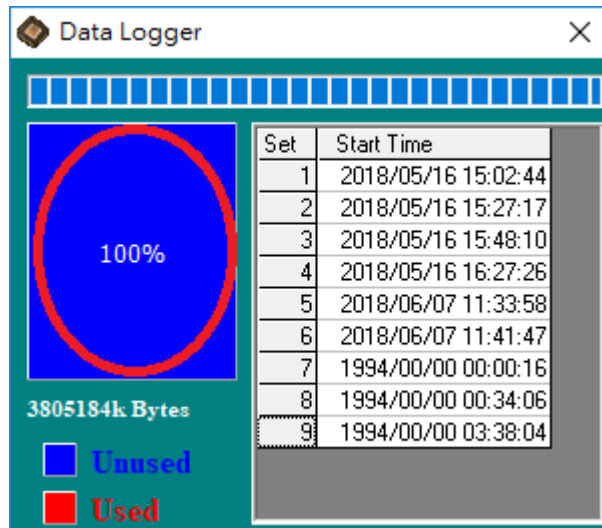


Click on a SET number to view the set's details. For example, in the window above, there are 9 sets from which to choose. The list rightside is an example of an opened set.

Click  button to draw graphic




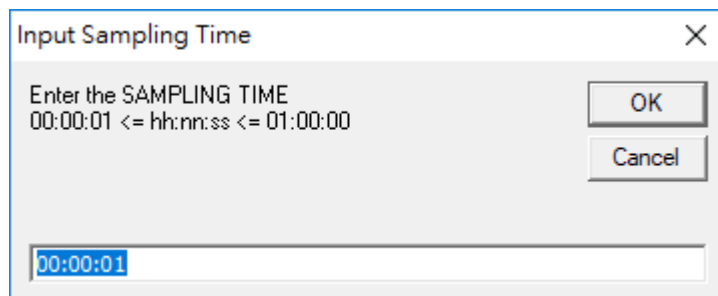
To erase saved data in EEP ROM, click  in the **Menu Bar** or the Memory label (see below) in the Data Logger window Press OK



Press OK to confirm.

## ■ Sampling Time

Click  on the **Menu Bar** to set the meter sampling time.




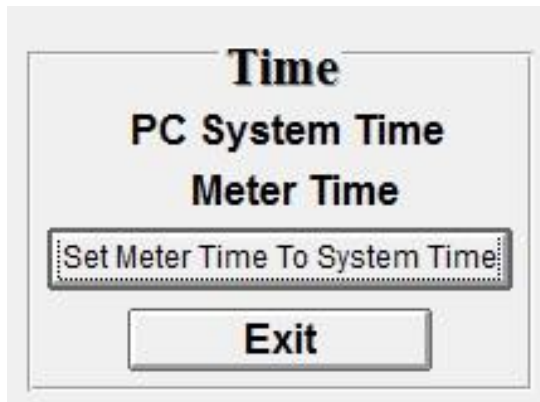
The dialog box is titled "Input Sampling Time" and has a close button (X) in the top right corner. Inside the dialog, the text "Enter the SAMPLING TIME" is followed by the format "00:00:01 <= hh:mm:ss <= 01:00:00". Below this text is a text input field containing "00:00:01". To the right of the input field are two buttons: "OK" and "Cancel".

Input a sampling time and then click "**OK**" button to confirm.

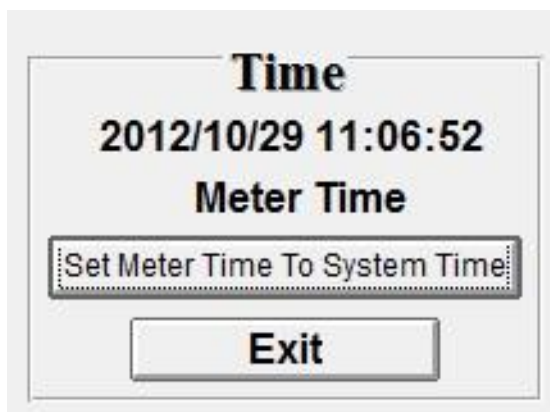


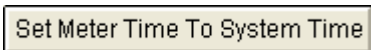
## ■ RTC ( Real Time Clock)

Click  on the **Menu Bar** to set the meter time to PC system time.



Click **PC System Time** to show PC System Time or **Meter Time** to show Meter Time.



Click  to set the meter time to PC system time.

