

**Identificação:**

Empresa Avaliadora: ETC relatórios  
Responsável Técnico: João Augusto  
Empresa Avaliada: FISP 2022  
Funcionário Avaliado: José Garcia  
Setor: Empilhadeira  
Jornada de Trabalho: 08:00  
Calibração Inicial: 94.0  
Calibração Final: 93.9

ID Medição: 7  
Data da Medição: 13/10/2022  
Início da Medição: 14:13:16  
Fim da Medição: 15:27:13  
Duração da Medição: 01:13:49  
Tempo Pausado (min): 0  
Intervalo de Amostragem (min): 1

**Configuração:**

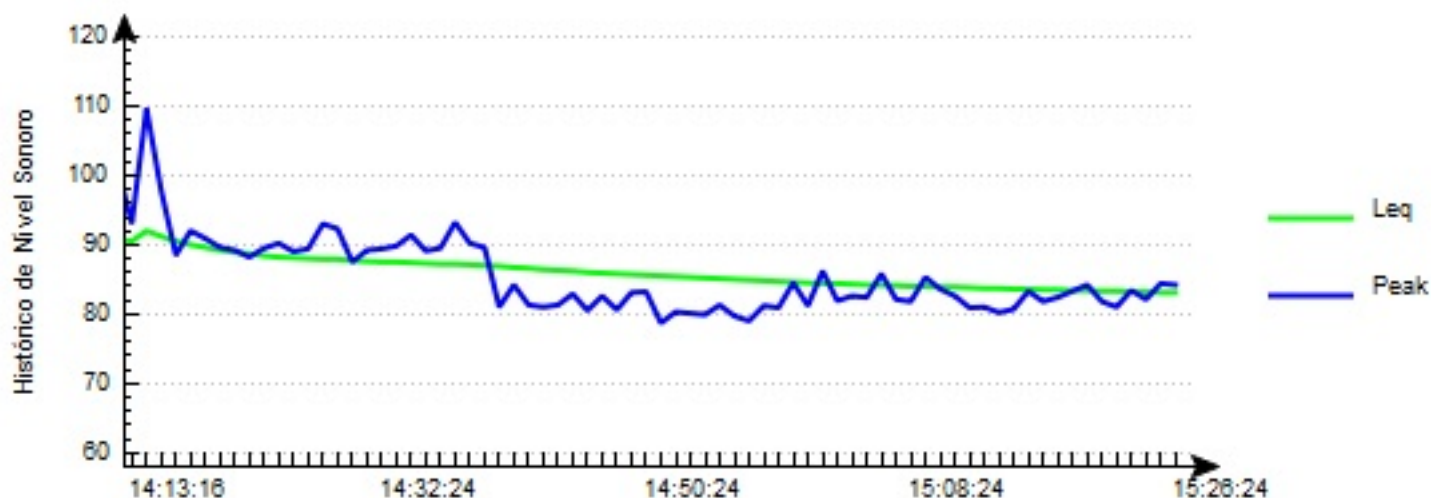
Dados:	NHO - 01	NR - 15	Usuário
Ponderação Temporal:	Lento(S)	Lento(S)	Lento(S)
Ponderação em Frequência:	A	A	A
Limiar de Nível:	80	80	80
Nível de Critério:	85	85	85
Taxa de Troca:	3	5	3
Excedência:	115	115	115

**Resultados:**

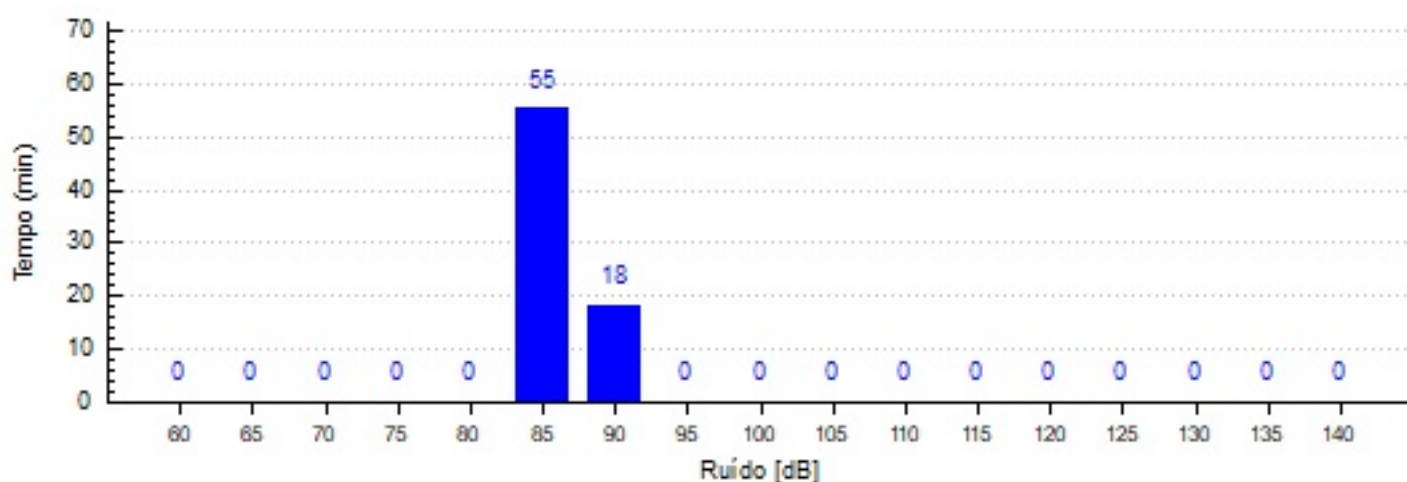
Dados:	NHO - 01	NR - 15	Usuário
Dose [%]:	8.8	6.4	8.8
Dose Projetada [%]:	57.0	41.7	57.0
Lavg/Leq [dB]:	82.6	78.7	82.6
NE [dB]:	82.6	78.7	82.6
NEN [dB]:	82.6	78.7	82.6
TWA[dB]:	74.4	65.2	74.4
pTWA[dB]:	82.6	78.7	82.6
Exph:	0.098	0.098	0.098
Lmax:	109.6	109.6	109.6
tLmax:	14:16:16	14:16:16	14:16:16
Lmin:	43.0	43.0	43.0
tLmin:	14:27:30	14:27:30	14:27:30
Contador excedência:	0	0	0
Tempo de excedência:	00:00:00	00:00:00	00:00:00

## Gráficos

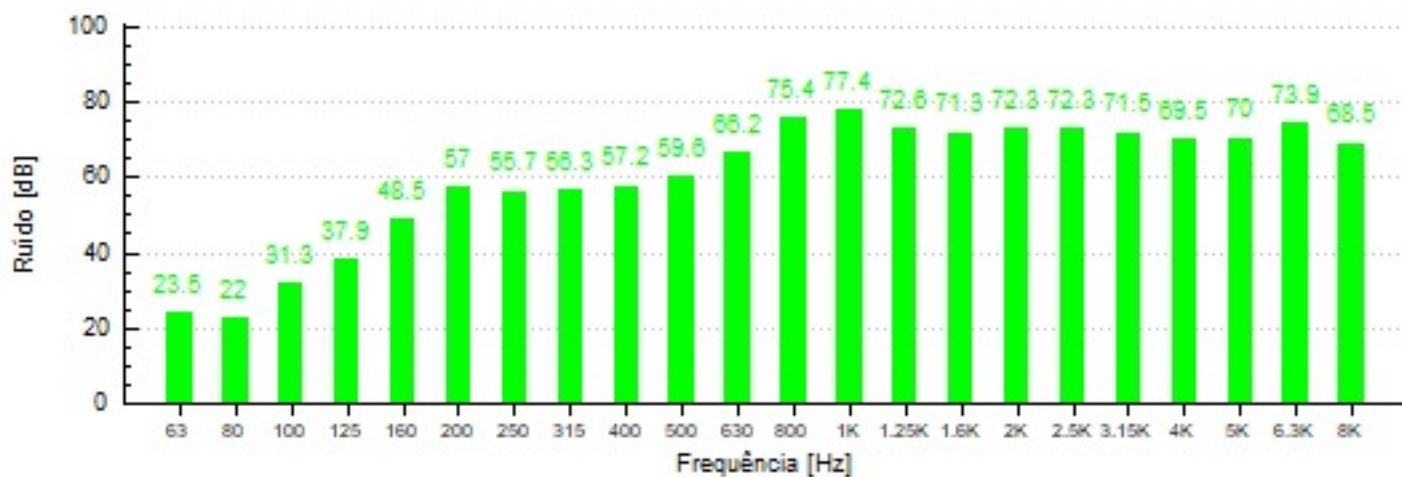
### Histórico de Nível Sonoro - NHO-01



### Histograma - NHO-01

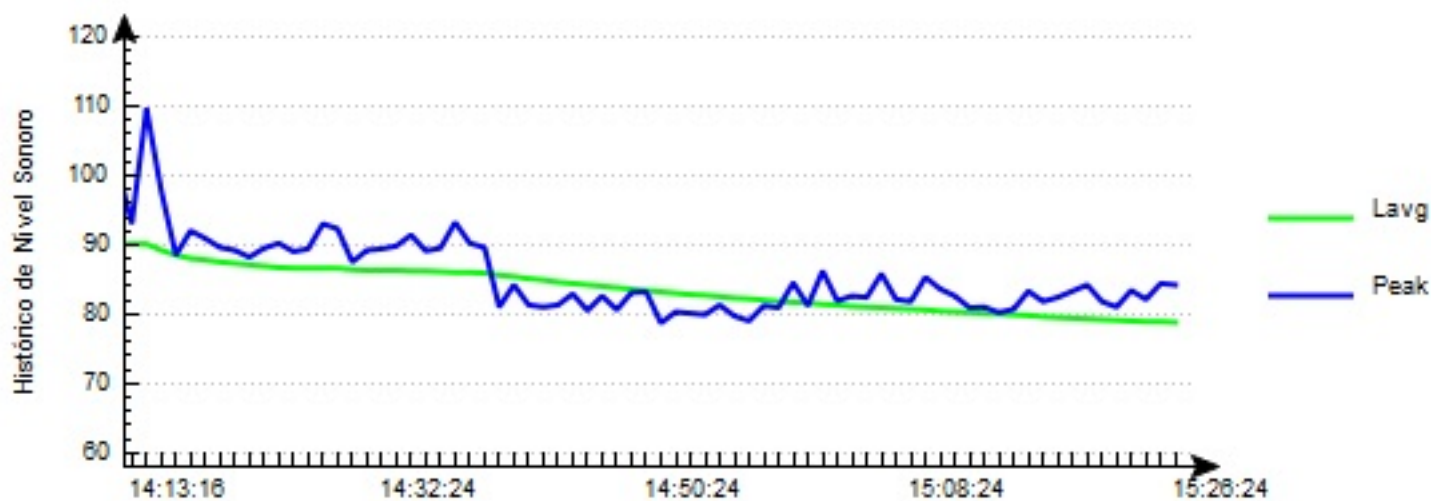


### Nível de Ruído Médio em Filtro de Oitava - NHO-01

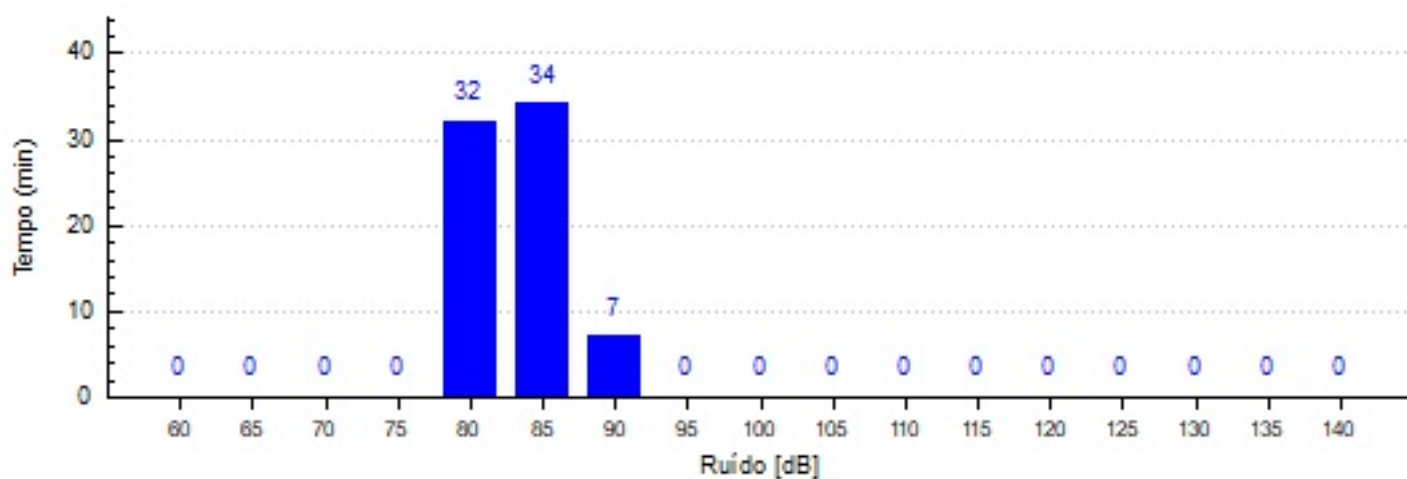


## Gráficos

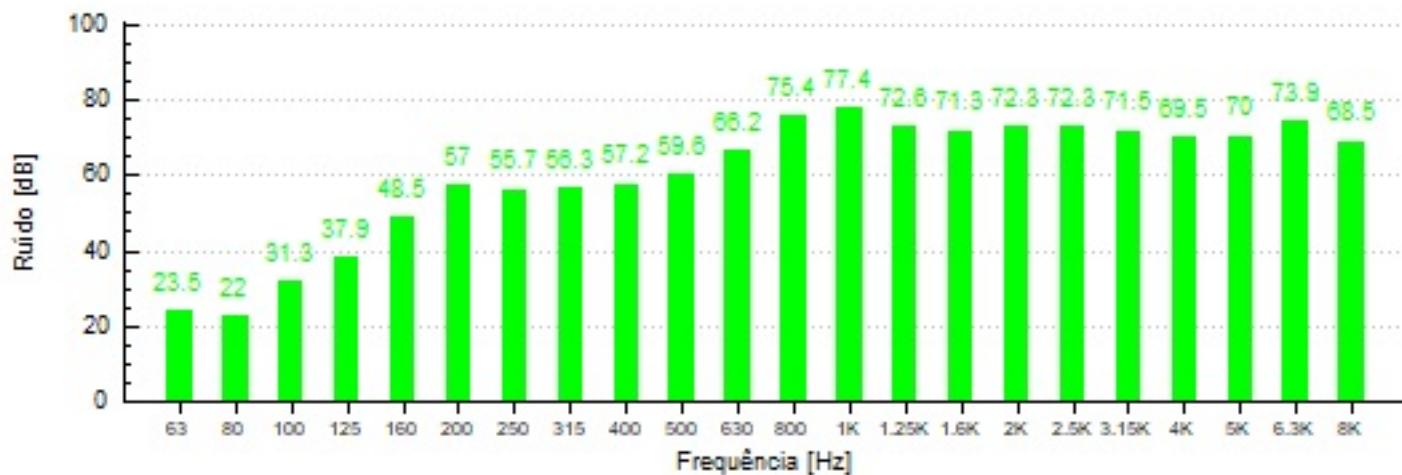
### Histórico de Nível Sonoro - NR-15



### Histograma - NR-15

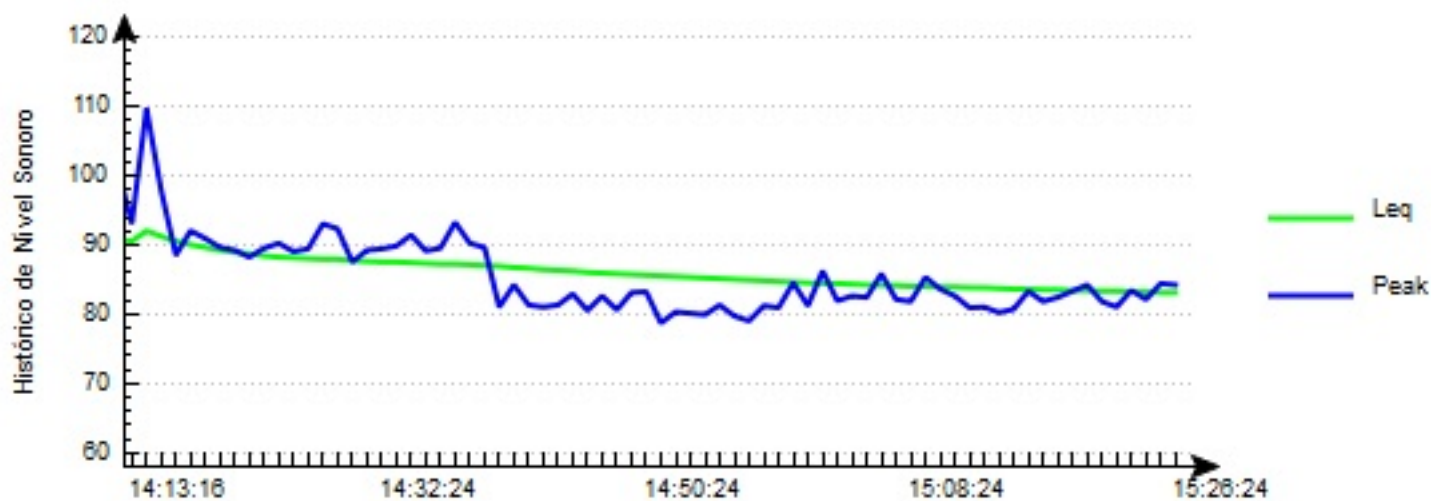


### Nível de Ruído Médio em Filtro de Oitava - NR-15

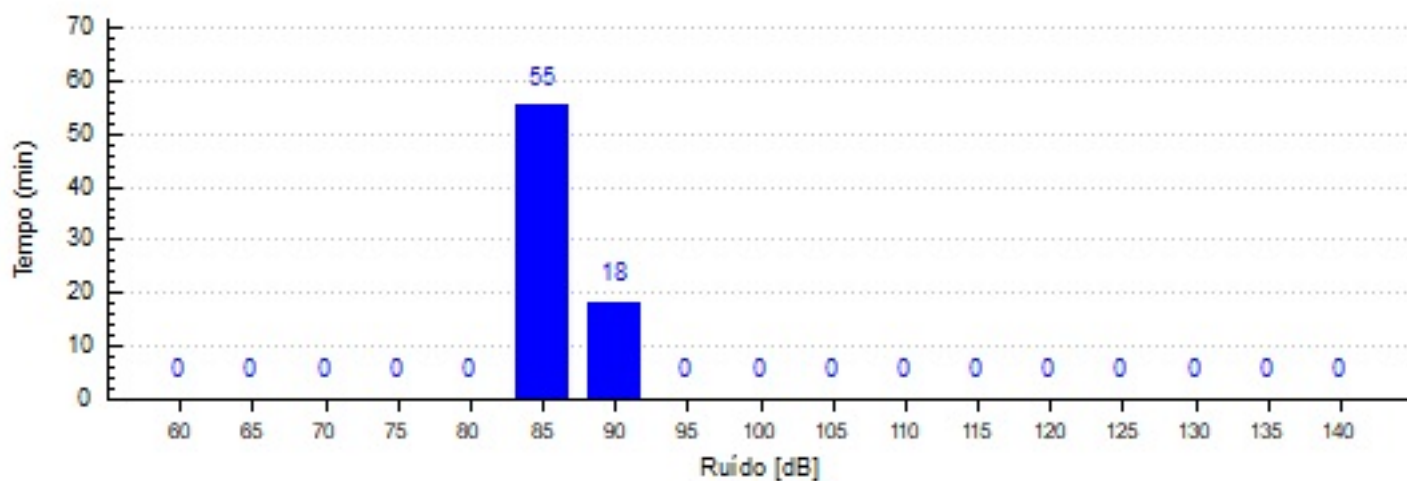


## Gráficos

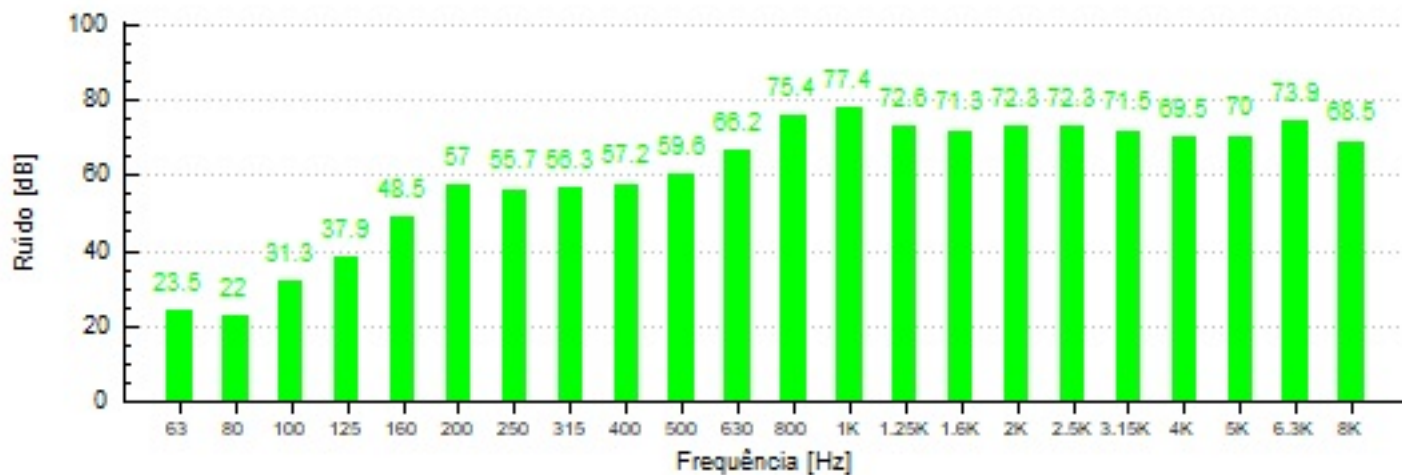
### Histórico de Nível Sonoro - Usuário



### Histograma - Usuário



### Nível de Ruído Médio em Filtro de Oitava - Usuário



**Observações:**

Nos primeiros 05 minutos o veículo se movimentou sobre piso não pavimentado

## Tabela

NHO - 01							NR - 15							Usuário						
Tempo	Leq	Peak	Lavg	Peak	Leq	Peak	Tempo	Leq	Peak	Lavg	Peak	Leq	Peak							
14:14:24	90.8	101.3	90.0	101.3	90.8	101.3	15:11:24	83.9	82.6	80.3	82.6	83.9	82.6							
14:15:24	90.5	93.1	90.1	93.1	90.5	93.1	15:12:24	83.8	80.9	80.2	80.9	83.8	80.9							
14:16:24	92.0	109.6	90.1	109.6	92.0	109.6	15:13:24	83.7	81.0	80.1	81.0	83.8	81.0							
14:17:24	91.2	97.8	89.2	97.8	91.2	97.8	15:14:24	83.7	80.2	80.0	80.2	83.7	80.2							
14:18:24	90.5	88.5	88.5	88.5	90.5	88.5	15:15:24	83.6	80.7	79.9	80.7	83.6	80.7							
14:19:24	90.0	92.0	88.0	92.0	90.0	92.0	15:16:24	83.6	83.3	79.8	83.3	83.6	83.3							
14:20:24	89.6	90.9	87.8	90.9	89.6	90.9	15:17:24	83.5	81.8	79.6	81.8	83.5	81.8							
14:21:24	89.2	89.6	87.5	89.6	89.2	89.6	15:18:24	83.5	82.4	79.5	82.4	83.5	82.4							
14:22:24	88.9	89.2	87.3	89.2	88.9	89.2	15:19:24	83.4	83.3	79.4	83.3	83.4	83.3							
14:23:24	88.7	88.2	87.1	88.2	88.7	88.2	15:20:24	83.4	84.2	79.3	84.2	83.4	84.2							
14:24:24	88.4	89.5	86.9	89.5	88.4	89.5	15:21:24	83.3	81.8	79.2	81.8	83.3	81.8							
14:25:24	88.2	90.2	86.7	90.2	88.2	90.2	15:22:24	83.3	81.0	79.1	81.0	83.3	81.0							
14:26:24	88.1	89.0	86.6	89.0	88.1	89.0	15:23:24	83.2	83.4	79.0	83.4	83.2	83.4							
14:27:24	88.0	89.4	86.6	89.4	88.0	89.4	15:24:24	83.2	82.1	78.9	82.1	83.2	82.1							
14:28:24	87.9	93.0	86.6	93.0	87.9	93.0	15:25:24	83.1	84.4	78.9	84.4	83.1	84.4							
14:29:24	87.9	92.3	86.6	92.3	87.9	92.3	15:26:24	83.1	84.2	78.8	84.2	83.1	84.2							
14:30:24	87.7	87.5	86.4	87.5	87.7	87.5														
14:31:24	87.6	89.2	86.3	89.2	87.6	89.2														
14:32:24	87.5	89.4	86.3	89.4	87.5	89.4														
14:33:24	87.5	89.8	86.3	89.8	87.5	89.8														
14:34:24	87.4	91.4	86.2	91.4	87.4	91.4														
14:35:24	87.3	89.1	86.2	89.1	87.3	89.1														
14:36:24	87.2	89.5	86.1	89.5	87.2	89.5														
14:37:24	87.2	93.2	86.0	93.2	87.2	93.2														
14:38:24	87.1	90.2	86.0	90.2	87.1	90.2														
14:39:24	87.0	89.6	85.9	89.6	87.0	89.6														
14:40:24	86.9	81.0	85.6	81.0	86.9	81.0														
14:41:24	86.7	84.2	85.4	84.2	86.7	84.2														
14:42:24	86.6	81.3	85.1	81.3	86.6	81.3														
14:43:24	86.4	81.0	84.9	81.0	86.4	81.0														
14:44:24	86.3	81.3	84.6	81.3	86.3	81.3														
14:45:24	86.2	82.9	84.4	82.9	86.2	82.9														
14:46:24	86.0	80.5	84.2	80.5	86.0	80.5														
14:47:24	85.9	82.6	84.0	82.6	85.9	82.6														
14:48:24	85.8	80.6	83.8	80.6	85.8	80.6														
14:49:24	85.7	83.1	83.6	83.1	85.7	83.1														
14:50:24	85.6	83.2	83.4	83.2	85.6	83.2														
14:51:24	85.5	78.7	83.2	78.7	85.5	78.7														
14:52:24	85.4	80.3	83.0	80.3	85.4	80.3														
14:53:24	85.3	80.1	82.8	80.1	85.3	80.1														
14:54:24	85.2	79.9	82.7	79.9	85.2	79.9														
14:55:24	85.1	81.3	82.5	81.3	85.1	81.3														
14:56:24	85.0	79.7	82.3	79.7	85.0	79.7														
14:57:24	84.9	79.0	82.2	79.0	84.9	79.0														
14:58:24	84.8	81.2	82.0	81.2	84.8	81.2														
14:59:24	84.7	80.9	81.8	80.9	84.7	80.9														
15:00:24	84.6	84.5	81.7	84.5	84.6	84.5														
15:01:24	84.5	81.2	81.6	81.2	84.5	81.2														
15:02:24	84.4	86.2	81.4	86.2	84.4	86.2														
15:03:24	84.4	81.9	81.3	81.9	84.4	81.9														
15:04:24	84.3	82.6	81.1	82.6	84.3	82.6														
15:05:24	84.2	82.4	81.0	82.4	84.2	82.4														
15:06:24	84.2	85.8	80.9	85.8	84.2	85.8														
15:07:24	84.1	82.1	80.8	82.1	84.1	82.1														
15:08:24	84.0	81.8	80.7	81.8	84.0	81.8														
15:09:24	84.0	85.3	80.6	85.3	84.0	85.3														
15:10:24	83.9	83.6	80.4	83.6	83.9	83.6														